



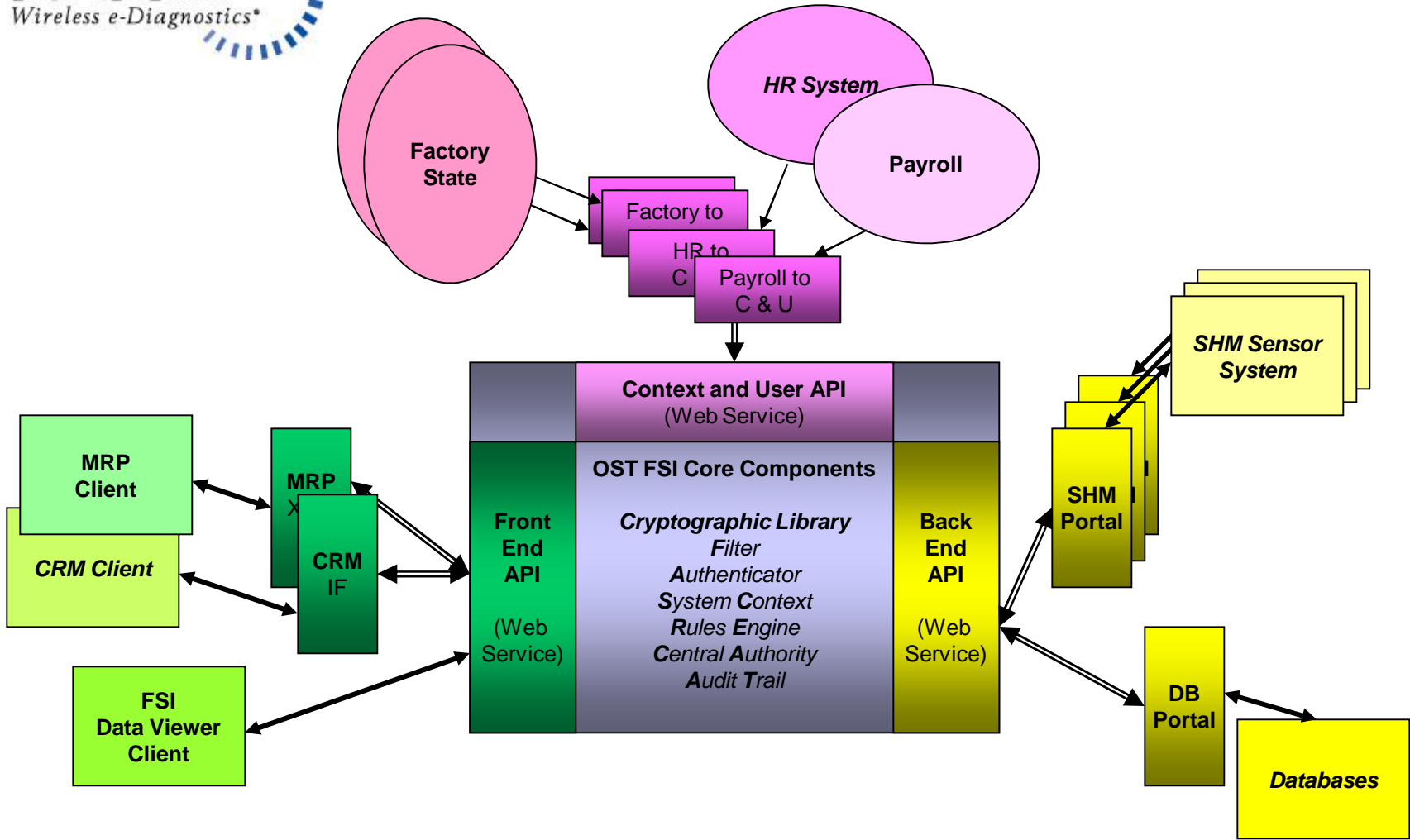
# Fortress System Products

Fortress Secure Interface®

Fortress Cryptographic Library™

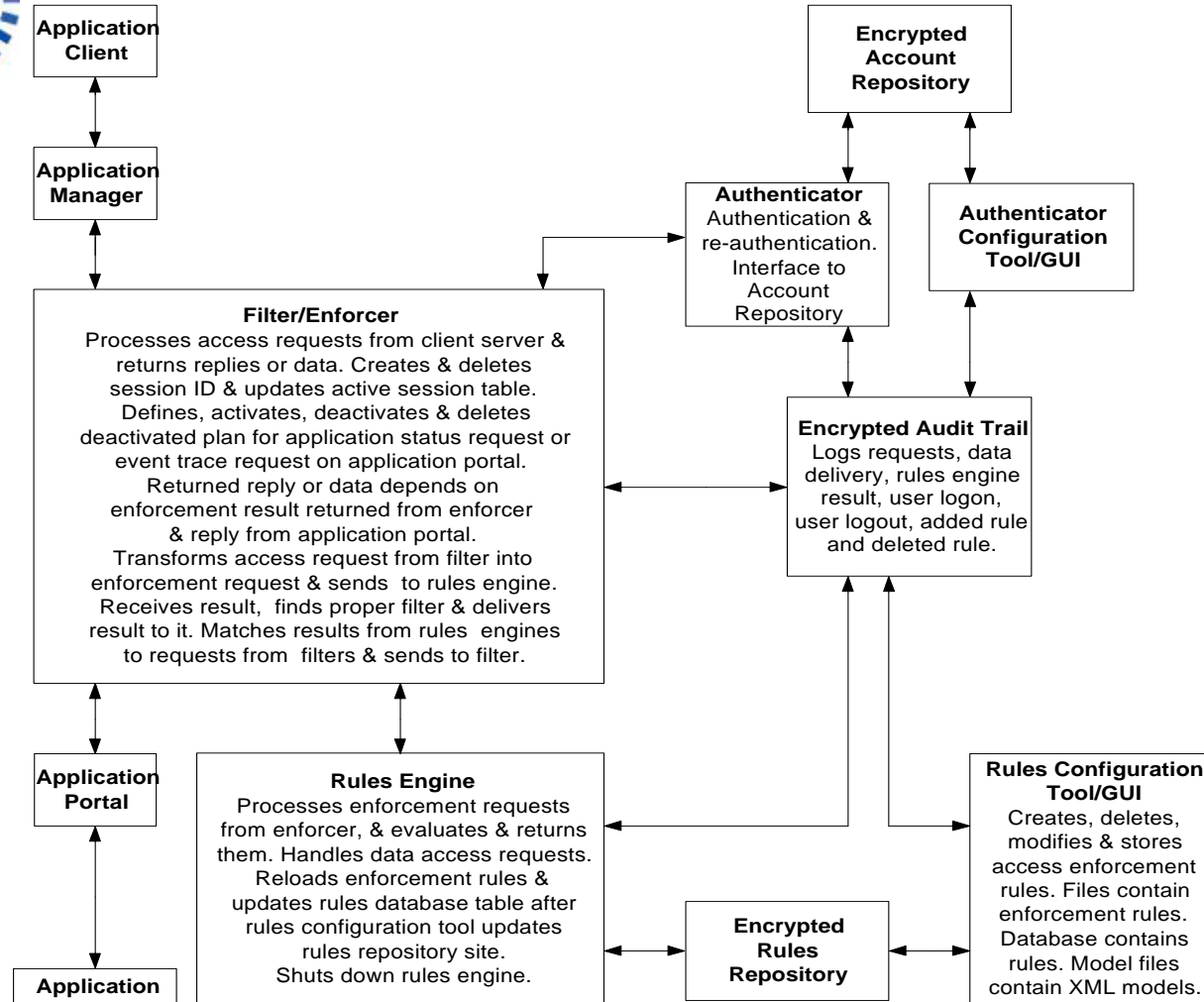
(FIPS 140-2 certified)

# OST Fortress Secure Interface™

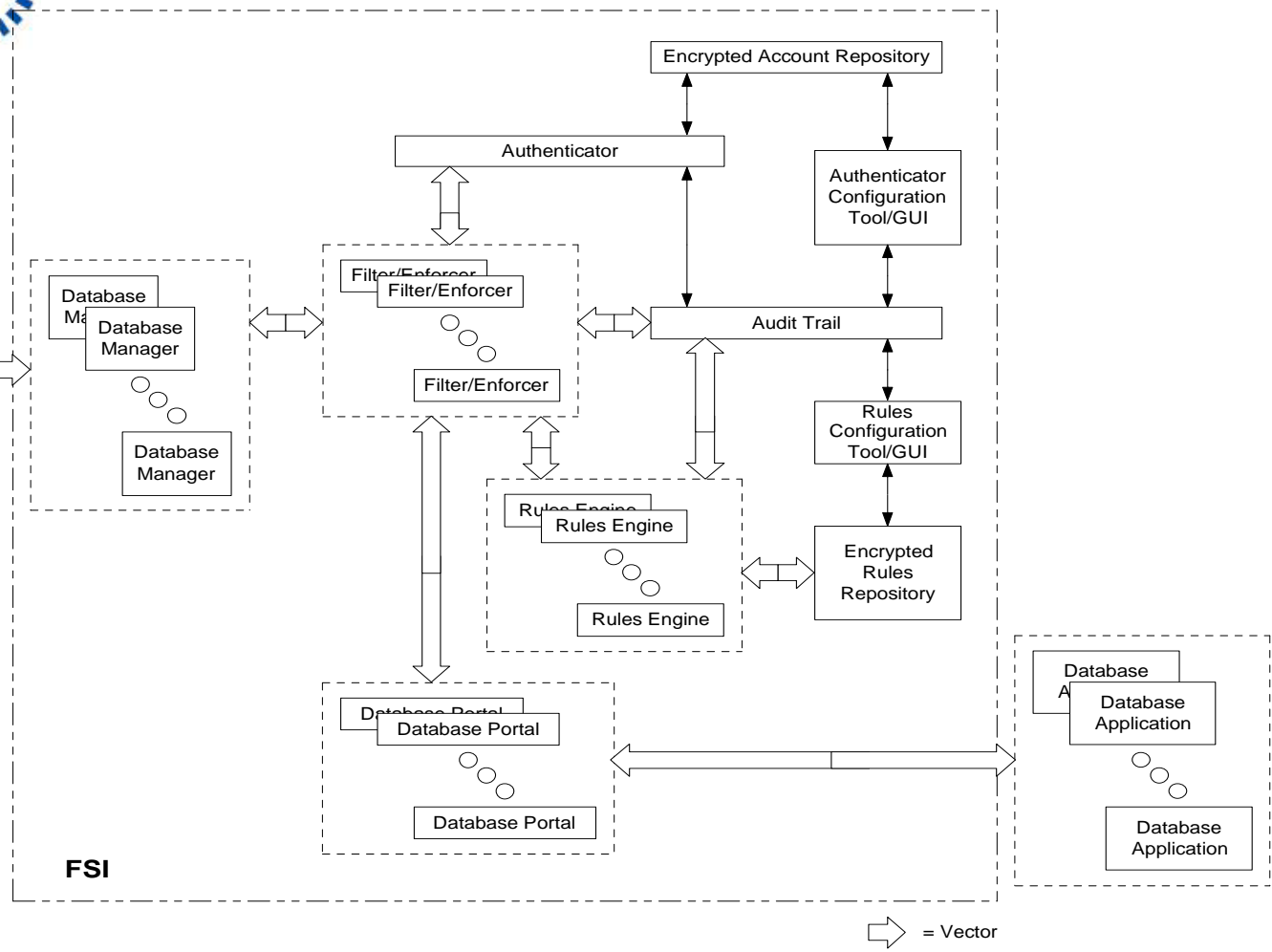




# Modular Functionality

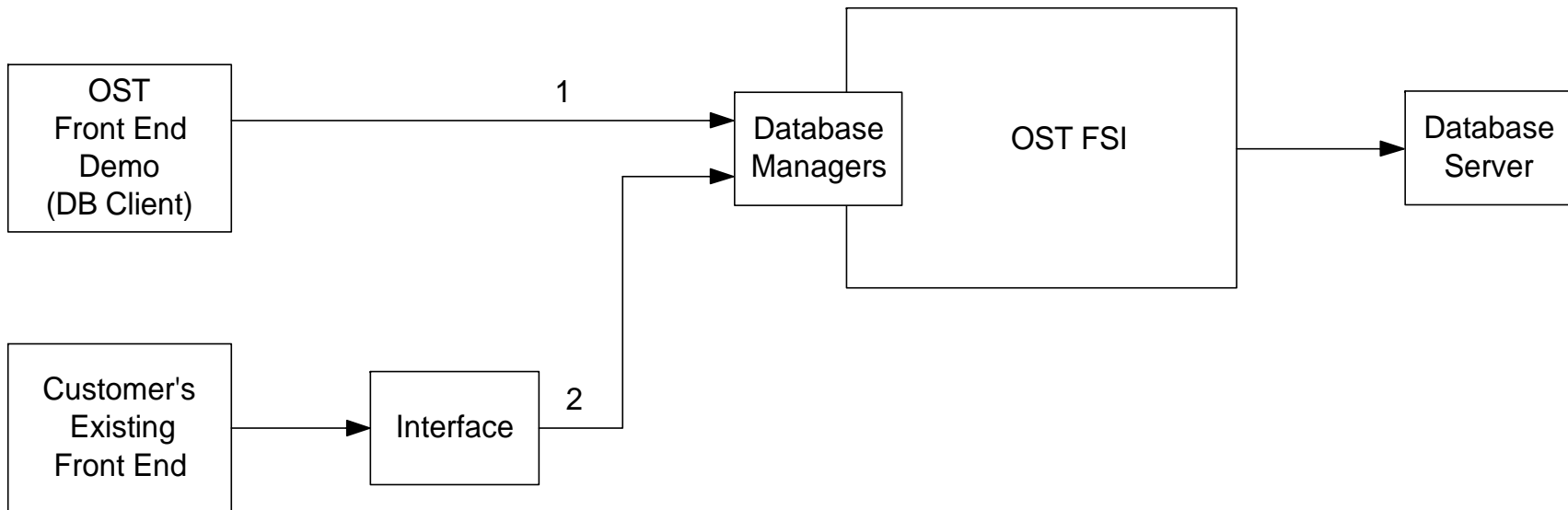


**Fortress  
Secure  
Interface™  
(FSI)  
Protecting a  
Database  
Application**

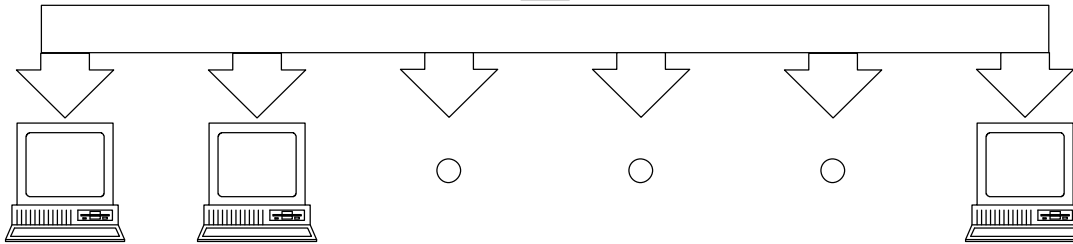
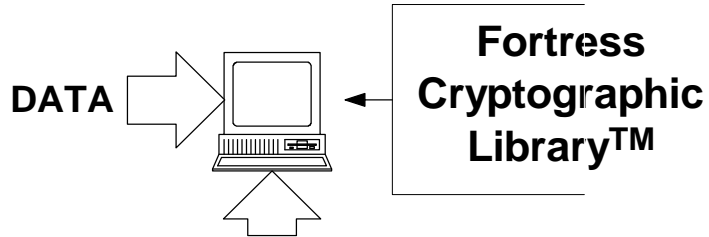




# Customer Installation



Note:  
The OST front end and GUIs  
can be incorporated into  
customer's front end.



**OUTPUTS:**

**Fortress  
Secure  
Interface®  
(FSI)  
Application**

- Diagnostic and Prognostic Metrics
- Adaptive Importance Sampling
- Extreme Value Theory
- Latin Hypercubes
- Response Surfaces
- Bayesian Belief Methods
- Dempster-Shafer
- Kalman / Extended Kalman Filtering
- Sensor/data Fusion
- Legacy Data Analysis Methods
- Virtual Sensing
- Model/sensor Coupling